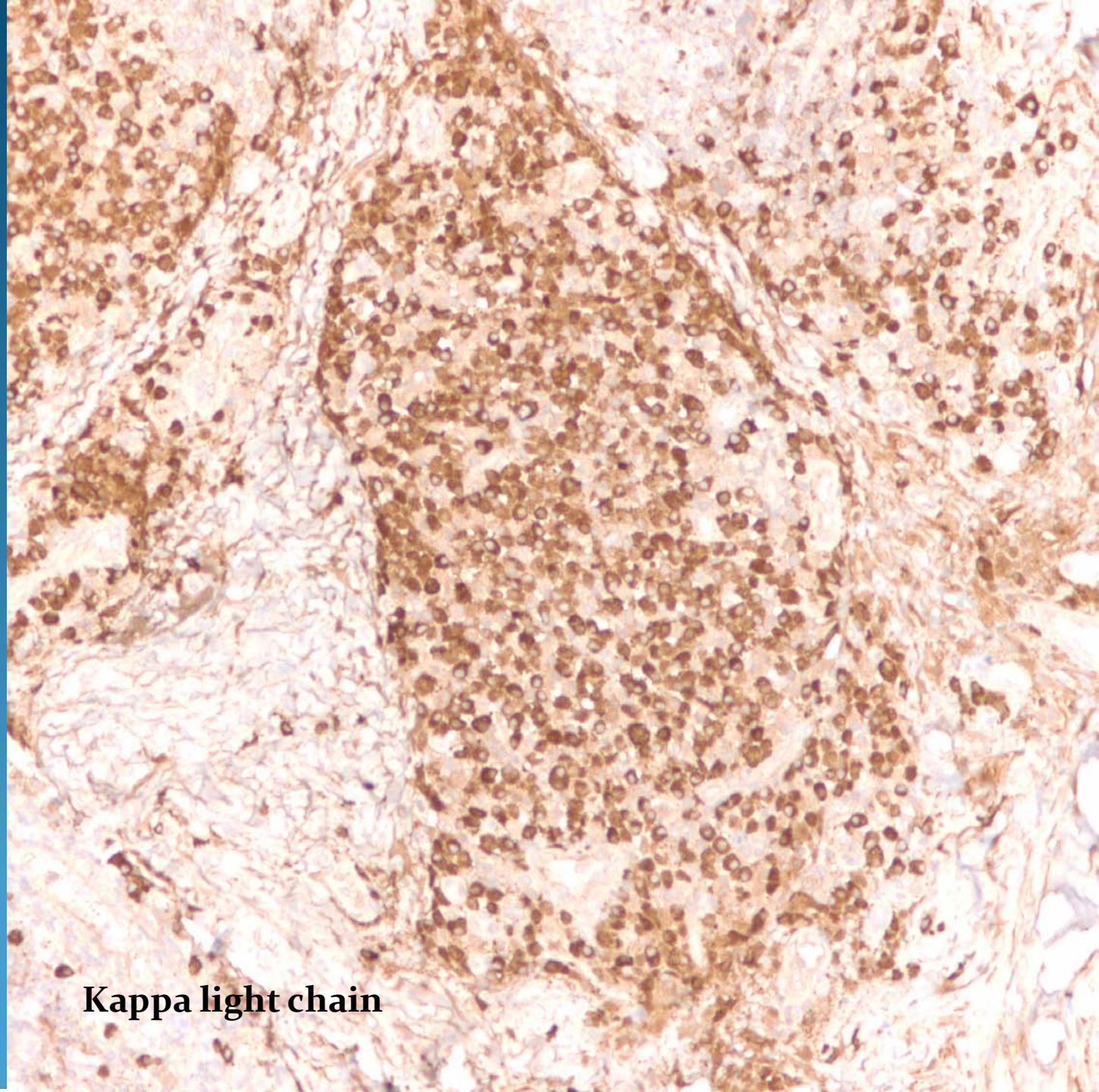


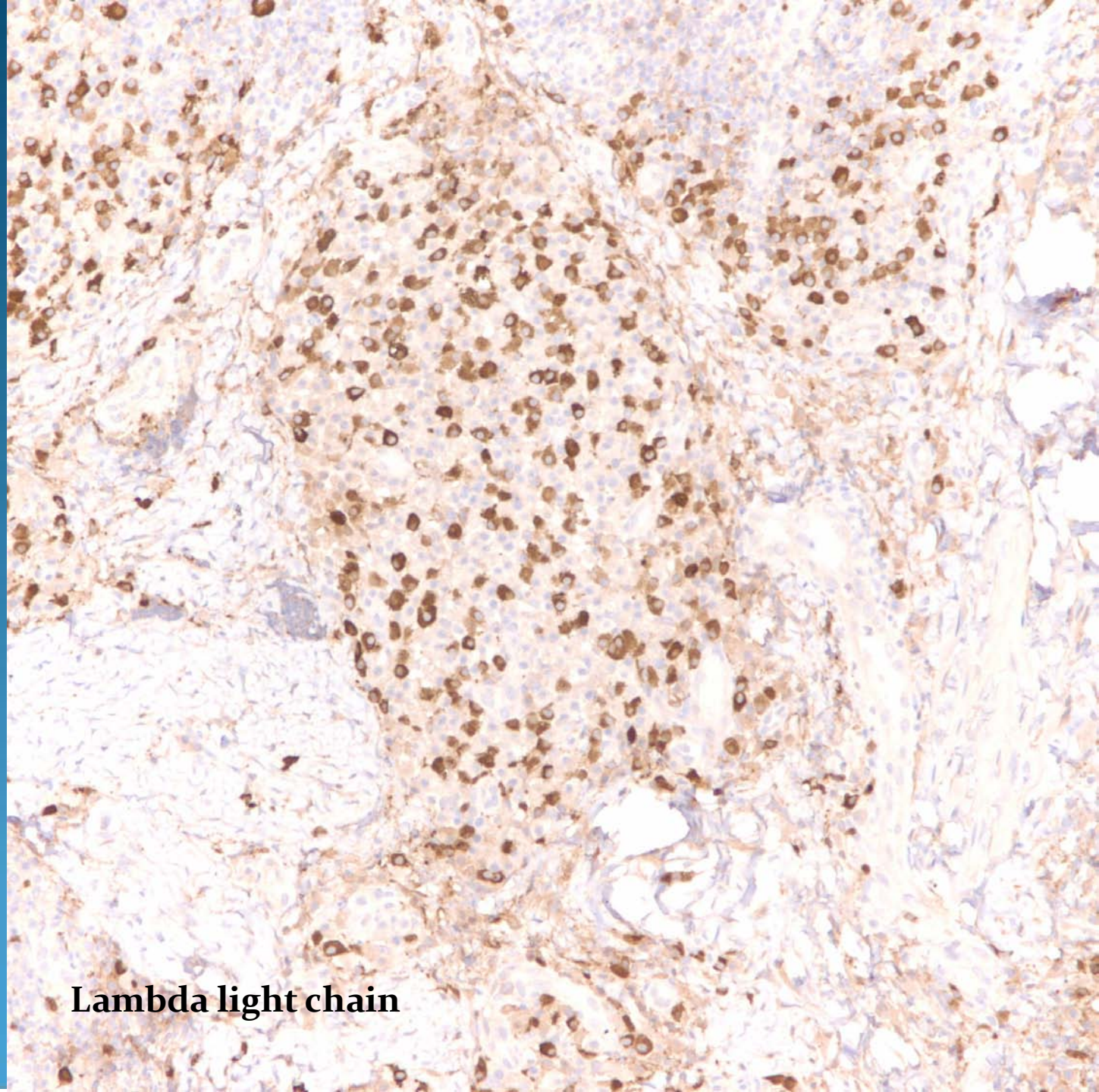
# Cutaneous Plasmacytoma





**Kappa light chain**

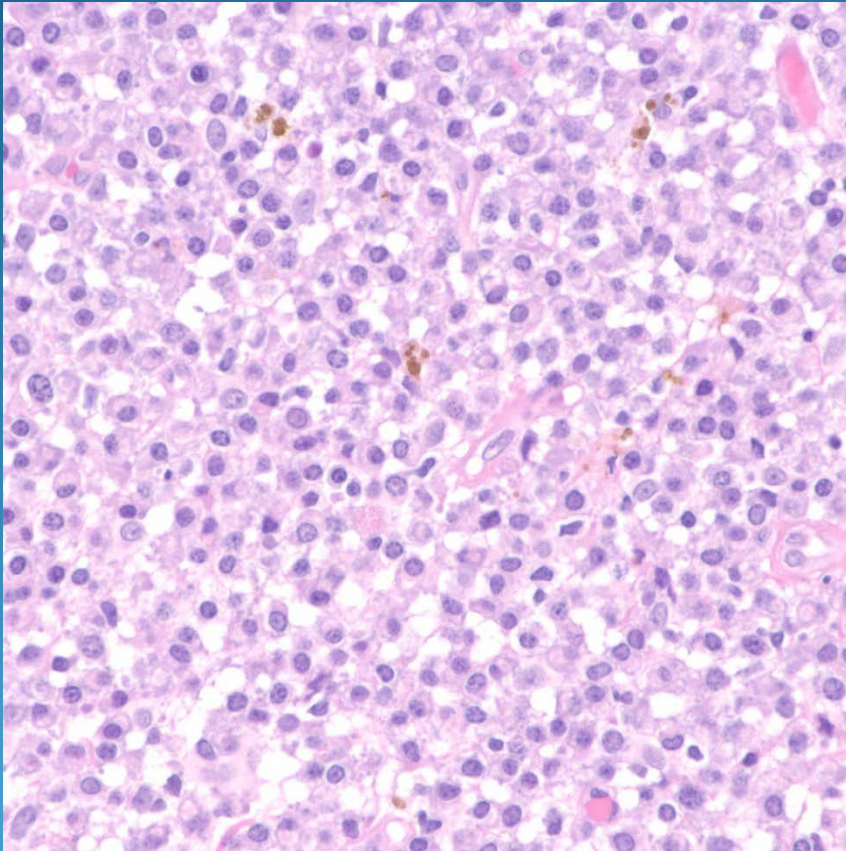




**Lambda light chain**



# Pearls



- Diffuse plasma cell infiltrate
- May show varying stages of immaturity including plasmablasts
- Rule out infection and chronic inflammatory dermatoses
- Confirm with lambda/kappa light chain staining
- Rule out systemic plasma cell myeloma